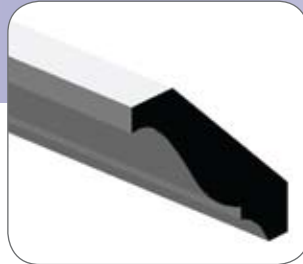


Scotia

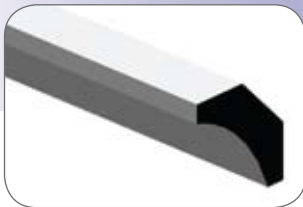
Many mouldings can be created to your own specifications. If you are renovating, we can match exactly your existing mouldings.



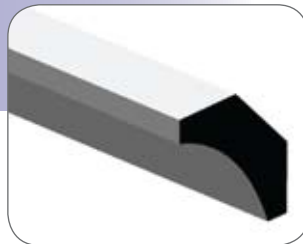
SC1818 - PRIMED
FINGER JOINTED PINE



SC10025 - PRIMED
FINGER JOINTED PINE



SC3232 - PRIMED MDF
SC3030 - PRIMED
FINGER JOINTED PINE



SC4040 - PRIMED
FINGER JOINTED PINE

HOW TO ORDER YOUR MOULDING

Ordering your moulding is simple.
We just need the answers to a few questions:

1. Are you painting or staining your moulding?
This will determine which timber you choose.
If you are painting, choose Pine or MDF.
2. Choose the appropriate timber species
3. Choose your moulding number
4. Work out the quantity required.

If you wish to match an existing moulding,
we require:

1. A sample or "to scale" drawing
2. Timber species required
3. Quantity required

**Please call our friendly staff on 03 9808 5522
to help you with these questions.**

**Hazelwood
& Hill**
1931-2011
80years

Phone 03 9808 5522

www.hazelwoodhill.com.au

18 McIntyre Street, Burwood Victoria 3125

sales@hazelwoodhill.com.au • Fax (03) 9808 7226